

■ PNP Transistors



■ Simplified outline(SOT-23)

■ Features

- Complementary to S9014

■ Absolute Maximum Ratings Ta = 25°C

| Parameter | Symbol | Rating | Unit |
|-------------------------------|------------------|------------|------|
| Collector-Base Voltage | V _{CB0} | -50 | V |
| Collector-Emitter Voltage | V _{CEO} | -45 | V |
| Emitter-Base Voltage | V _{EB0} | -5 | V |
| Collector Current -Continuous | I _C | -0.1 | A |
| Collector Power Dissipation | P _C | 0.2 | W |
| Junction Temperature | T _J | 150 | °C |
| Storage Temperature | T _{stg} | -55 to 150 | °C |

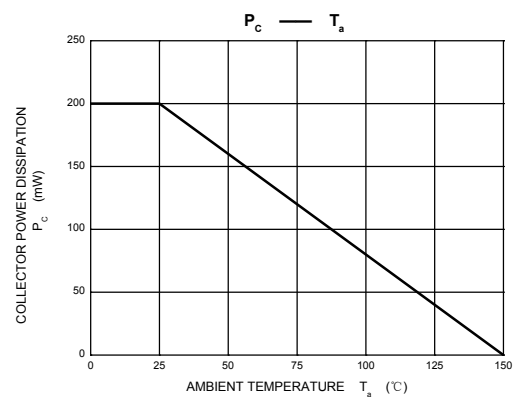
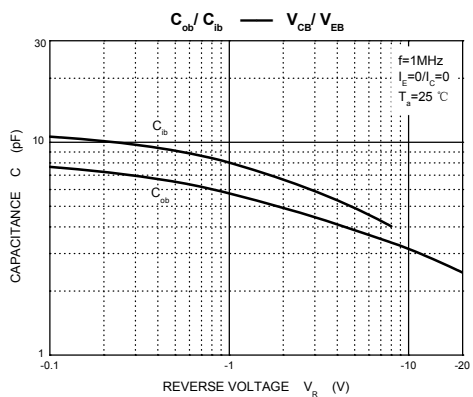
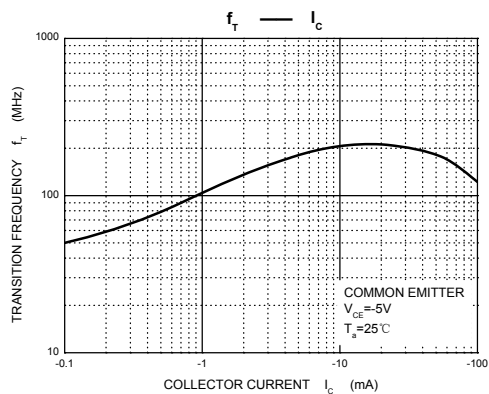
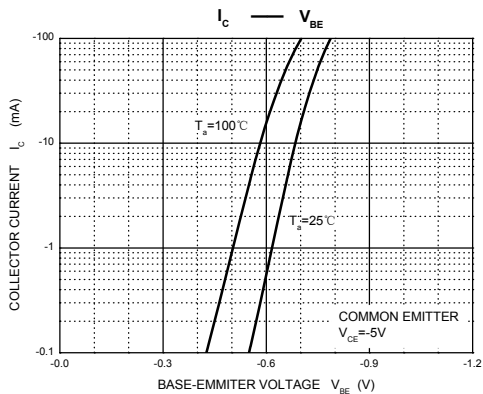
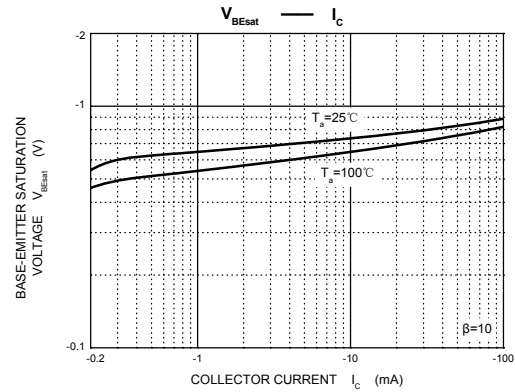
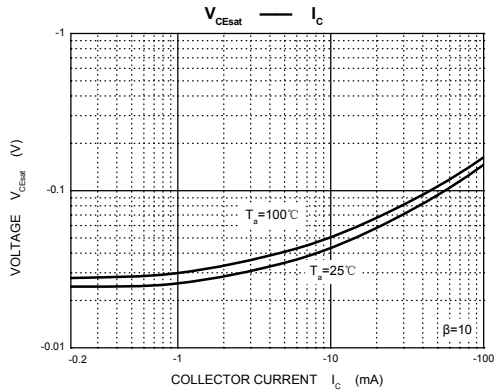
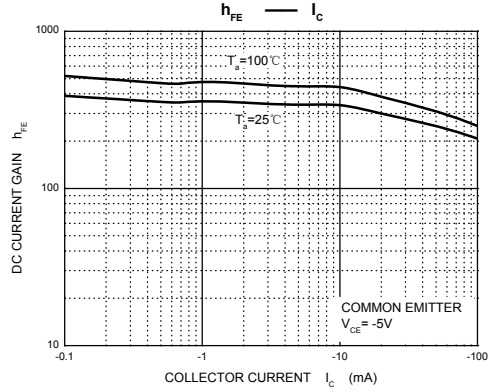
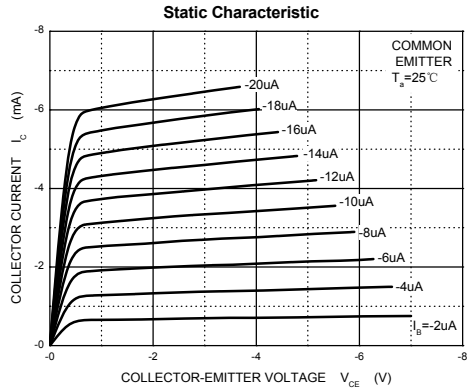
■ Electrical Characteristics Ta = 25°C

| Parameter | Symbol | Testconditions | Min | Typ | Max | Unit |
|--------------------------------------|----------------------|------------------------------------------------------|-----|-----|------|------|
| Collector-base breakdown voltage | V _{CB0} | I _C =-100uA, I _E =0 | -50 | | | V |
| Collector-emitter breakdown voltage | V _{CEO} | I _C =-1mA, I _B =0 | -45 | | | V |
| Emitter-base Breakdown voltage | V _{EB0} | I _E =-100 uA, I _C =0 | -5 | | | V |
| Collector cutoff current | I _{CB0} | V _{CB} =-50V, I _E =0 | | | -0.1 | μ A |
| Emitter cutoff current | I _{EB0} | V _{EB} =-5V, I _C =0 | | | -0.1 | μ A |
| DC current gain | h _{FE} | V _{CE} =-5V, I _C =-1mA | 200 | | 1000 | |
| Collector-emitter saturation voltage | V _{CE(sat)} | I _C =-100mA, I _B =-10mA | | | -0.3 | V |
| Base-emitter saturation voltage | V _{BE(sat)} | I _C =-100mA, I _B =-10mA | | | -1 | V |
| Transition frequency | f _T | V _{CE} =-5V, I _C =-10mA, f=30MHZ | 150 | | | MHz |

■ hFE Classification

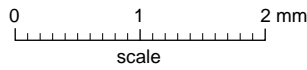
| Type | S9015-L | S9015-H |
|---------|---------|----------|
| Range | 200-450 | 450-1000 |
| Marking | M6 | |

■ Typical Characteristics



Package Outline

SOT-23



DIMENSIONS (mm are the original dimensions)

| UNIT | A | A ₁ max. | b _p | c | D | E | e | e ₁ | H _E | L _p | Q | v | w |
|------|------------|---------------------|----------------|--------------|------------|------------|-----|----------------|----------------|----------------|--------------|-----|-----|
| mm | 1.1 0.9 | 0.1 | 0.48 0.38 | 0.15 0.09 | 3.0 2.8 | 1.4 1.2 | 1.9 | 0.95 | 2.5 2.1 | 0.45 0.15 | 0.55 0.45 | 0.2 | 0.1 |

Summary of Packing Options

| Package | Packing Description | Packing Quantity | Industry Standard |
|---------|---------------------|------------------|-------------------|
| SOT-23 | Tape/Reel, 7" reel | 3000 | EIA-481-1 |