

# ABS210 ABS 整流桥堆 测试电源开机浪涌电流

**YFU**<sup>®</sup> Diode

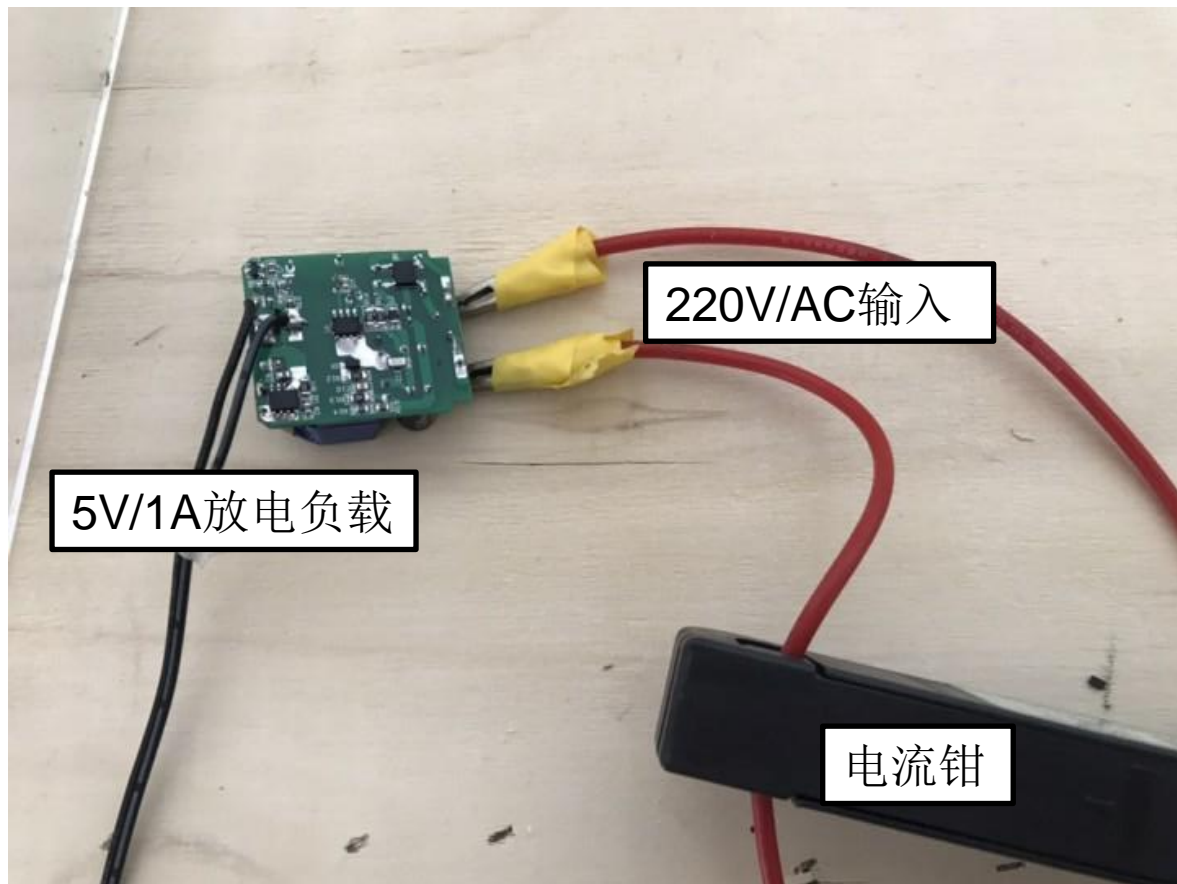
专业半导体二极管制造商

A professional manufacturer of semiconductor diode

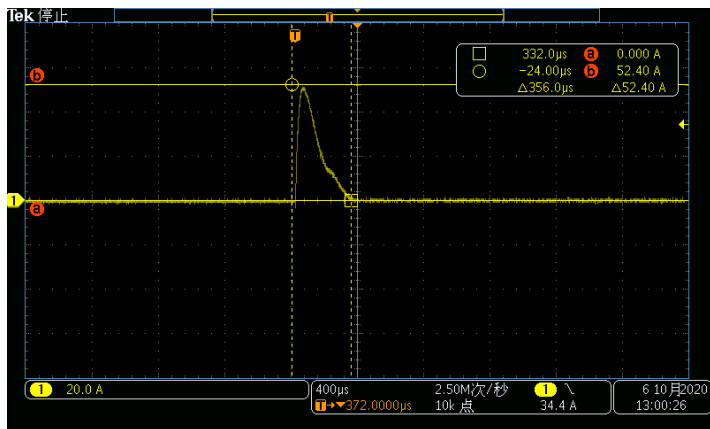
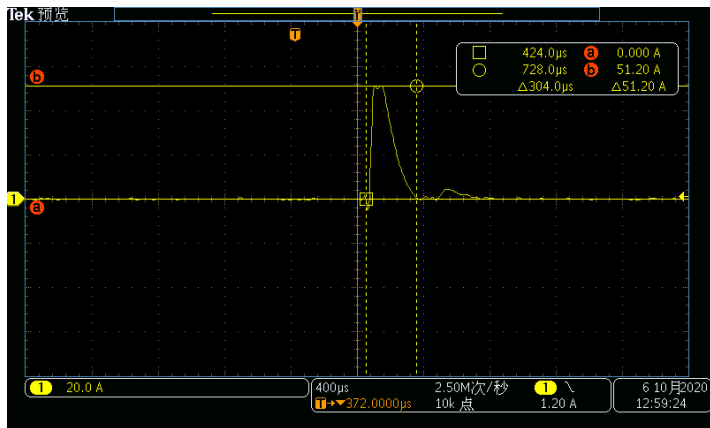


## 浪涌电流测试电路 客户电源为 5V3A/9V2A/12.5 V1.5A

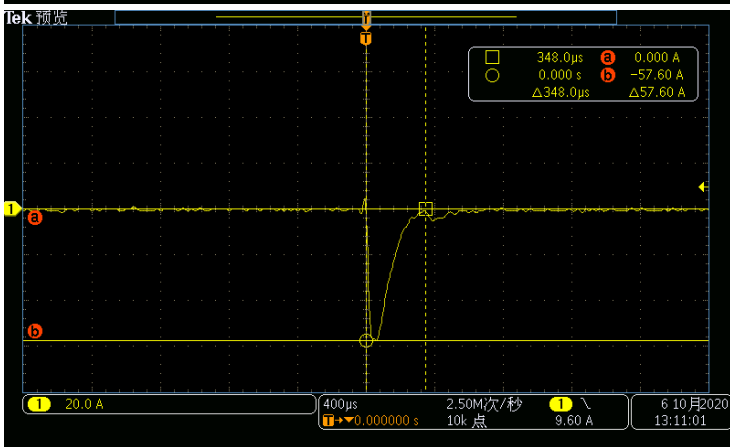
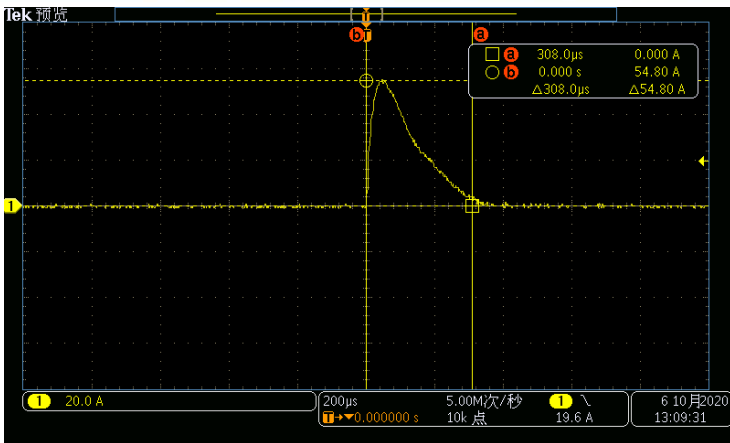
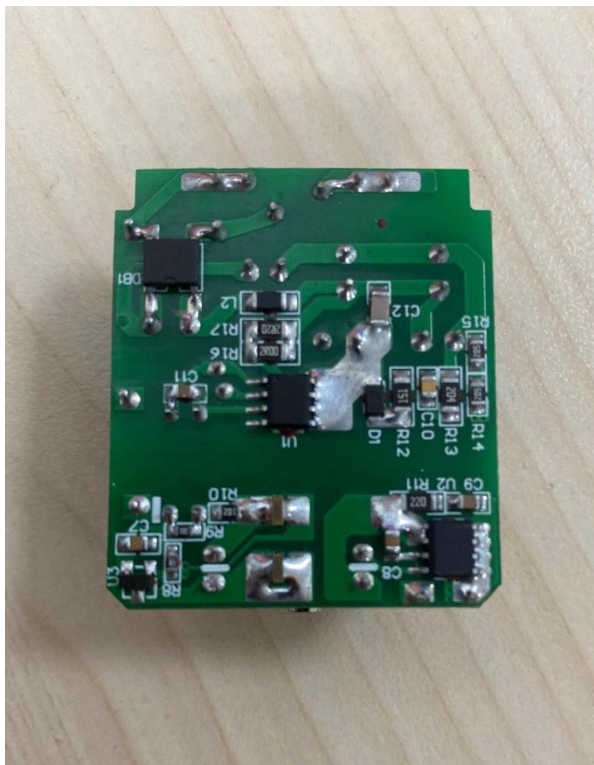
**结论：对电路板进行上电模拟，使用示波器抓取开机浪涌可见电路板开机浪涌值51A~57A**



# 开机浪涌波形 1#板



# 开机浪涌波形 2#板



## 我司ABS210极限浪涌能力值 ( 8.3ms)

编号	测试值 (A)	编号	测试值 (A)	编号	测试值 (A)
1#	73	5#	75	9#	76
2#	77	6#	78	10#	76
3#	72	7#	75	11#	75
4#	72	8#	72	12#	72

**结论：产品实际浪涌能力为72~78A,高于规格值50A**